

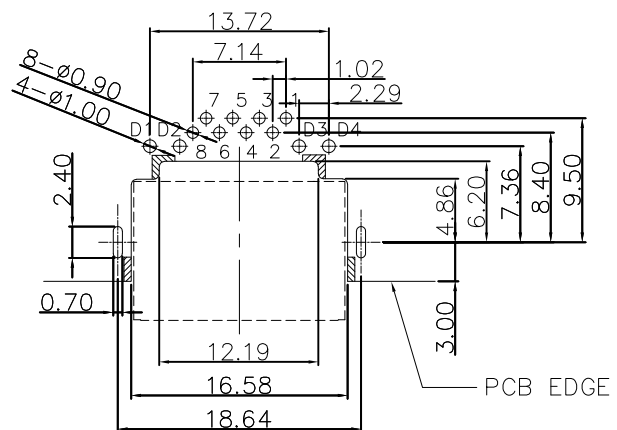
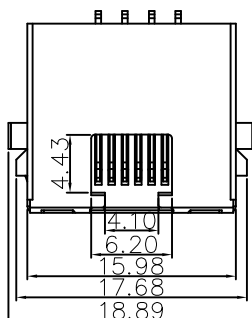
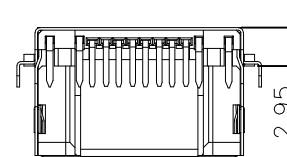
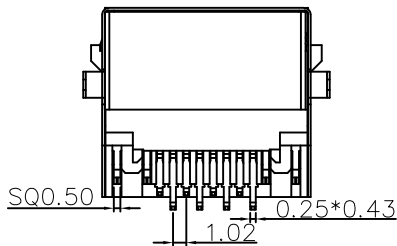
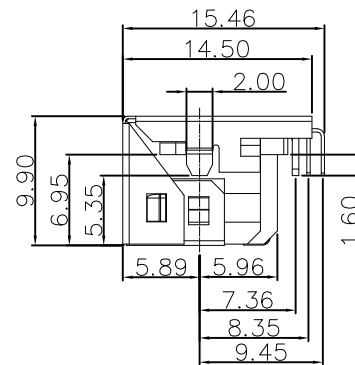
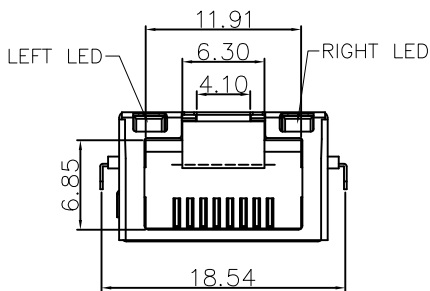
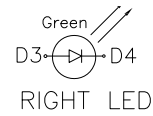
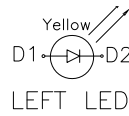
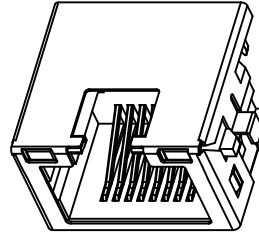
# Coorle 库乐科技

## Electrical Characteristics :

Insulation Resistance : 500MΩ Min.  
 Contact Resistance : 50mΩ Max.  
 Withstand Voltage : 1000 VAC 1 minute.  
 Current Rating : 1.5A

## Material:

Housing: Thermoplastic UL 94V-0  
 Contact : Selective Gold Plating  
 Terminal: 0.25mm Thickness Copper Alloy  
 Plated With Gold And Tin In Solder Area.  
 Shell: Alloy ,Nickel Plating  
 Fork:Alloy



P. C. B RECOMMENDED HOLE LAYOUT SEEN FROM COMPONENT SIDE.

ALL CENTERLINE DIMENSIONS ARE BASIC